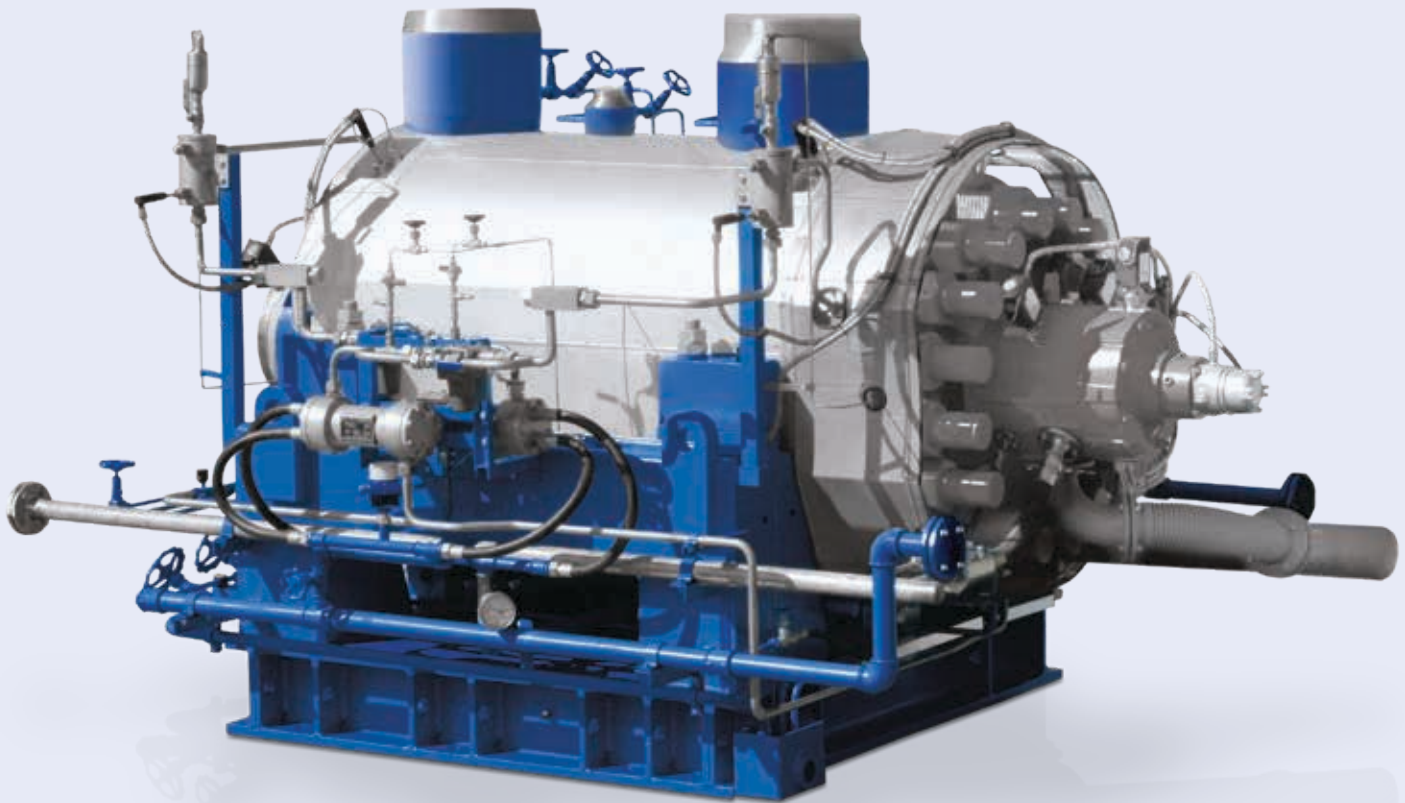


► Our technology. Your success.

Pumps • Valves • Service



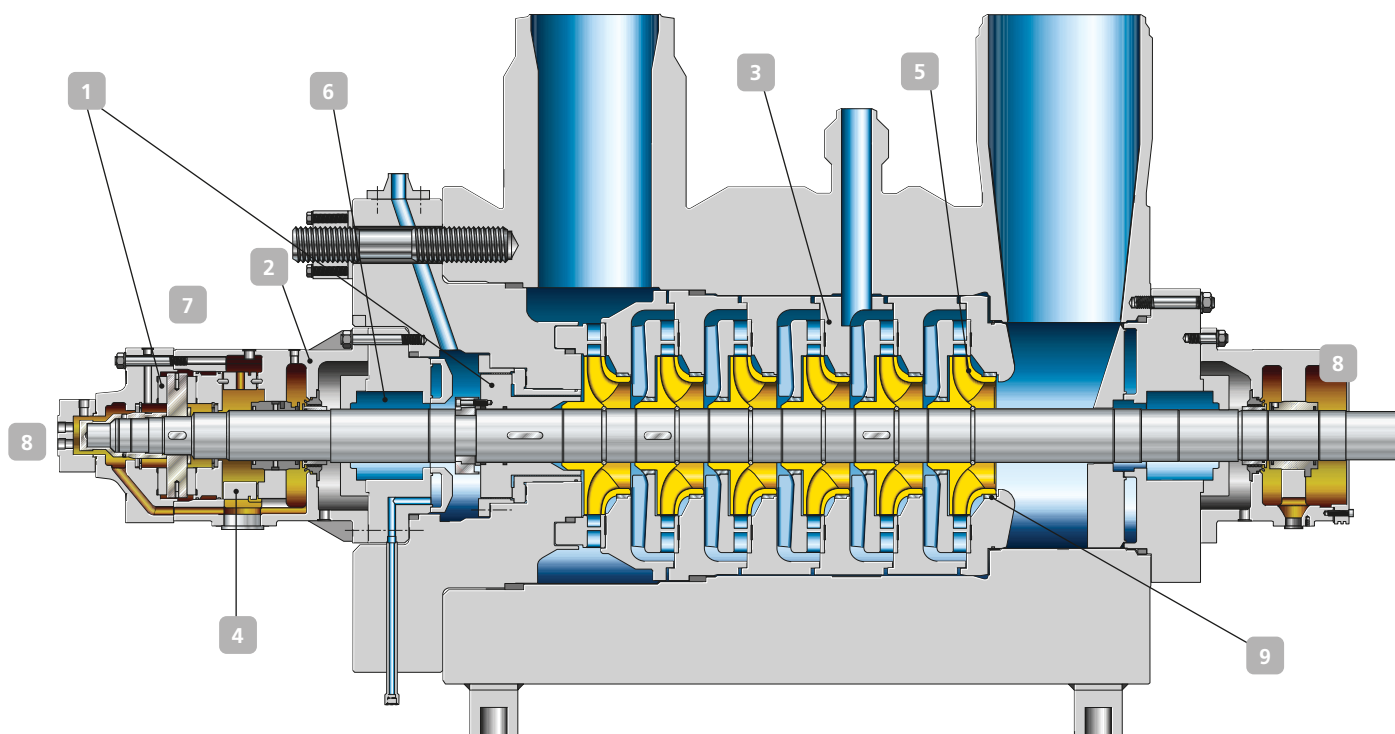
CHTD – Boiler feed pump



Applications:

- Handling of boiler feed water and condensate in power stations and industrial facilities
- Generation of pressurised water for descaling equipment

More information: www.ksb.com/products



High operating reliability

- 1 In the case of axial thrust balancing by double drum, the residual axial thrust is absorbed by a tilting-pad thrust bearing
- 2 Optimisation of casing design in terms of line of action of force
- 3 Adaptation of pump casing to rotor deflection line

Long service life

- 4 Transmission of axial forces to the bearing housing by means of a cardanic ring avoids wear on the thrust bearing
- 5 Low NPSH value thanks to fitting of suction stage impeller as a standard. Special blade profiling on suction impellers optimised to meet the demands of a particular application through computer-aided fine-tuning
- 6 Shaft seal concepts for all "operating conditions"

Easy of service

- 7 Replacement of pump cartridge without having to remove the pump from the piping
- 8 Maintenance work on wear parts with no opening of the pump

Reduced operating costs

- 9 Efficiency improvement through cellular surface wear rings

Materials

Barrel	carbon steel
Stage casing	chrome steel
Impeller / diffuser	chrome steel
Shaft	chrome steel

Technical data*

Capacity	Up to 5,700 m ³ /h
Head	Up to 5,400 m
Operating pressure	Up to 560 bar
Temperature	Up to 270 °C
Speed	Up to 6,750 m ¹
Frequency	50/60 Hz

*Higher ratings on request



KSB SE & Co. KGaA
 Johann-Klein-Straße 9
 67227 Frankenthal (Germany)
 www.ksb.com